

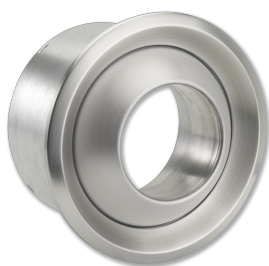


DUK-V



DUK-F

Fixed jet nozzle

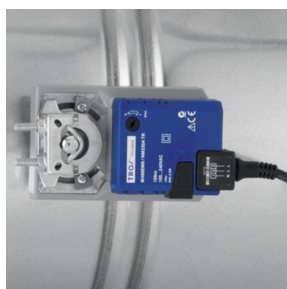


DUK-V

Adjustable jet nozzle



CONNECTION TO  
CIRCULAR DUCTS



ACTUATOR

## DUK

FOR INSTALLATION INTO WALLS AND ONTO  
RECTANGULAR AND CIRCULAR DUCTS, ADJUSTABLE  
AND FIXED – MADE OF ALUMINIUM

Adjustable and fixed jet nozzles achieve long throw distances and have  
excellent acoustic properties

- Nominal sizes: 100, 125, 160, 200, 250, 315 and 400 mm
- Volume flow rate range: 15 to 400 l/s or 54 to 1440 m³/h
- Visible parts made of aluminium
- For variable and constant volume flows
- Low sound power levels due to aerodynamically optimised nozzle contours
- Discharge angle can be adjusted manually or with an actuator
- Quick and easy to fix, concealed fixing

#### Optional equipment and accessories

- Exposed surface in RAL CLASSIC colours
- Circular spigot
- Connection pieces for circular and rectangular ducts
- Internal or external actuators for adjusting the discharge angle

## Application



### Application

- Type DUK jet nozzles for supply air discharge, with a long throw distance
- For production halls, gymnasiums, theatres and conference rooms as well as for large internal spaces in airports, railway stations and shopping centres
- Attractive design element for building owners and architects with demanding aesthetic requirements
- For supply air to room air temperature differences from -12 to +20 K
- Adjustable discharge angle, from -30 to +30°, for switching between heating and cooling mode
- For push fitting directly onto circular ducts or as a branch off circular or rectangular ducts; also for installation into walls and bulkheads

### Special characteristics

- High discharge momentum, hence large penetration depth in heating mode
- Optimised nozzle contours
- Fixed and adjustable variants
- Discharge angle can be adjusted from -30° to +30°, either manually or with an actuator
- Electric actuator as an option

### Nominal sizes

- 100, 125, 160, 200, 250, 315, 400 mm

From nominal size 160 with actuator

## Description



### Variants

- F: Fixed jet nozzle
- V: Adjustable jet nozzle

### Connection

- V-A: For circular ducts (direct connection)
- V-K: For rectangular ducts
- V-R: For circular ducts

### Actuator

- Manual adjustment
- E\*: Internal or external electric actuator

### Parts and characteristics

- Nozzle with acoustically optimised contours

#### **Useful additions**

- TDC temperature difference control module

#### **Construction features**

- Spigot (optional) suitable for circular ducts to EN 1506 or EN 13180.

#### **Materials and surfaces**

##### Fixed

- Nozzle made of aluminium
- Untreated surface

##### Adjustable

- Nozzle and face cover ring made of aluminium
- Spherical nozzle casing ring, casing, saddle connector and spigot made of galvanised sheet steel
- Spherical nozzle casing made of plastic, UL 94, V-0, flame retardant, heat resistant up to 50 °C
- Nozzle and face cover ring untreated
- Spherical nozzle casing similar to RAL 9010, white
- P0: Nozzle and face cover ring powder-coated RAL 9010, pure white
- P1: Nozzle and face cover ring powder-coated, RAL CLASSIC colour

#### **Standards and guidelines**

- Sound power level of the air-regenerated noise measured according to EN ISO 5135

#### **Maintenance**

- Maintenance-free as construction and materials are not subject to wear
- Inspection and cleaning to VDI 6022