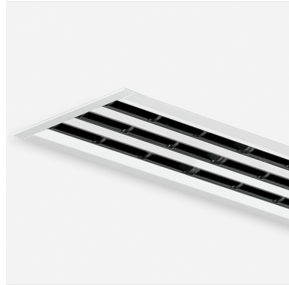
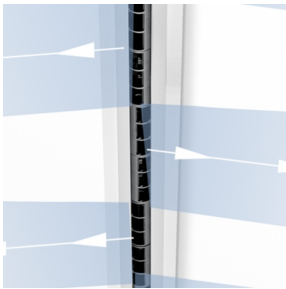


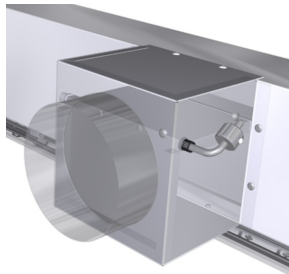
VSD35-1-VA/1200



INSTALLATION IN  
CONTINUOUS CEILINGS



ALTERNATING  
HORIZONTAL AIR  
DISCHARGE



VARYSET FLAP WITH  
BALANCE WEIGHT

## VSD35 VARYSET

**FOR LARGE, VARIABLE VOLUME FLOW RATE RANGES,  
STABLE DISCHARGE PATTERNS EVEN WITH SMALL  
VOLUME FLOW RATES**

Slot diffusers with 35 mm nominal width, with adjustable air control elements and self-powered Varyset flap for the adjustment of the active slot diffuser length

- Nominal length from 900 to 1500 mm, 1 or 4 slots
- Volume flow rate range 8 - 90 (l/s)/m or 29 - 324 (m<sup>3</sup>/h)/m
- Diffuser face made of extruded aluminium sections
- For variable volume flows
- Excellent room ventilation even with small volume flow rates due to self-powered Varyset flap
- Suitable for continuous linear arrangement
- High induction results in a rapid reduction of the temperature difference and airflow velocity
- Individually adjustable air control elements to meet individual local requirements

Optional equipment and accessories

- Exposed diffuser face available in RAL CLASSIC colours
- Diffuser face with extended border

- End plates, end angles

## Application

---



### Application

- Type VSD35 Varyset slot diffusers are used as supply air diffusers in comfort zones
- They blend in inconspicuously with continuous grid ceilings and plasterboard ceilings
- Excellent room ventilation even with minimum volume flow rates ( $V_{\min}$ )
- Air discharge is one-way or alternating horizontal, or alternating angled; turbulent flow (mixed flow ventilation)
- High induction results in a rapid reduction of the temperature difference and airflow velocity
- For variable volume flows
- For supply air to room air temperature differences from  $-10$  to  $+10$  K
- For room heights up to 4 m (lower edge of suspended ceiling)
- For suspended ceilings; suitable for restricted ceiling voids due to the low overall height of the plenum box
- Suitable for continuous linear arrangement

### Special characteristics

- Individually adjustable air control elements to meet individual local requirements
- Excellent room ventilation even with minimum volume flow rates ( $V_{\min}$ )
- High induction results in a rapid reduction of the temperature difference and airflow velocity
- Diffuser face has been optimised for maximum volume flow rate at low sound power levels
- Suitable for continuous linear arrangement

### Nominal sizes

- $L_N$ : 900, 1050, 1200, 1350, 1500 mm
- Diffuser face available in intermediate sizes from 901 to 2550 mm, in increments of 1 mm

## Description

---



### Variants

- VSD35-VA-\*: 1, 2, 3 or 4 slots
- VSD35-VA-...: Diffuser face without extended border
- VSD35-VA-.../B00: Diffuser face with extended border
- VSD35-VA-...: Black air control elements
- VSD35-VA-.../WW: White air control elements,

### Parts and characteristics

- Diffuser face with individually adjustable air control elements
- Plenum box for horizontal duct connection
- Self-powered Varyset flap with external balance weight
- Protective cap for the balance weight
- Clamp fixing
- Connecting pins and alignment plates to connect and align slot diffusers for a continuous linear arrangement

### Attachments

- C1, C2: Two end plates
- C5, C6: Two end angles

### Accessories

- Lip seal

### Useful additions

- EP: Two end plates

- EW: Two end angles
- To be ordered separately for continuous linear runs
- Corner section, see Type VSD35

#### **Construction features**

- Spigot suitable for circular ducts to EN 1506 or EN 13180

#### **Materials and surfaces**

- Diffuser face made from extruded aluminium sections
- Air control elements made of plastic, UL 94, V-0, flame retardant
- Plenum box made of galvanised sheet steel
- Varyset flap, end plate and end angle made of aluminium
- Lip seal made of rubber
- Diffuser face with anodised finish, E6-C-0, natural colour
- P1: Powder-coated, RAL CLASSIC colour
- Air control elements similar to RAL 9005, black
- WW: Air control elements similar to RAL 9010, white

#### **Standards and guidelines**

- Sound power level of the air-regenerated noise measured according to EN ISO 5135

#### **Maintenance**

- Maintenance-free as construction and materials are not subject to wear
- Inspection and cleaning to VDI 6022